



Carport system
with sun protection

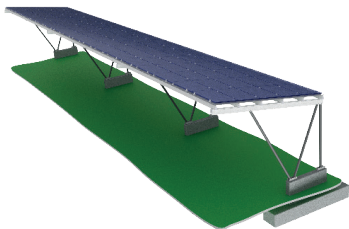


Carport system
with rain protection

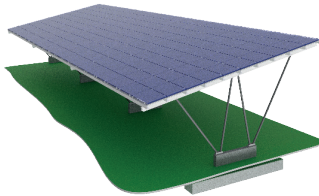
- Carport kits for private users and company parking
- Ideal modular complete system (project-related, customer-specific)
- Competent advice, calculation and support
- Applicable for most standard module sizes
- Carport inclination 10°-15°
- 10 years durability guarantee



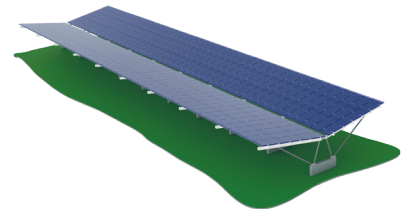
C1



C2



C2Y



VARIANTS

SL Rack carport systems is available in 2 basic versions:

- C1** for parking on one side
- C2** for parking on both sides

Both variants serve as sun protection in the basic version „S“ (Sun) and as rain protection in the extended version „R“ (Rain), which is provided by an additional trapezoidal sheet metal.

Thus 6 versions are available:

- C1S** one-sided sun protection
- C1R** one-sided rain protection
- C2S** double-sided sun protection
- C2R** rain protection on both sides
- C2YS** Y-version, sun protection on both sides
- C2YR** Y-version, rain protection on both sides

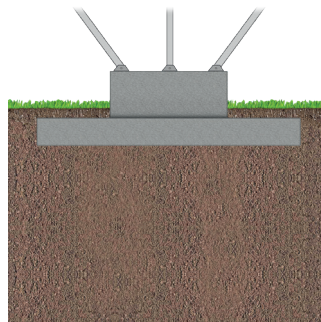
SCOPE OF DELIVERY

The carports are delivered as a complete set ready for assembly. Our service package includes:

- Aluminium/steel construction/sheet metal roof
- Module clamps
- Static calculation of the substructure

REQUIRED ON SITE (to be provided by customers themselves)

- Competent and qualified installation team, concrete foundations incl. anchoring and installation of the same, modules, inverters, electrical installation, mains connection, permits

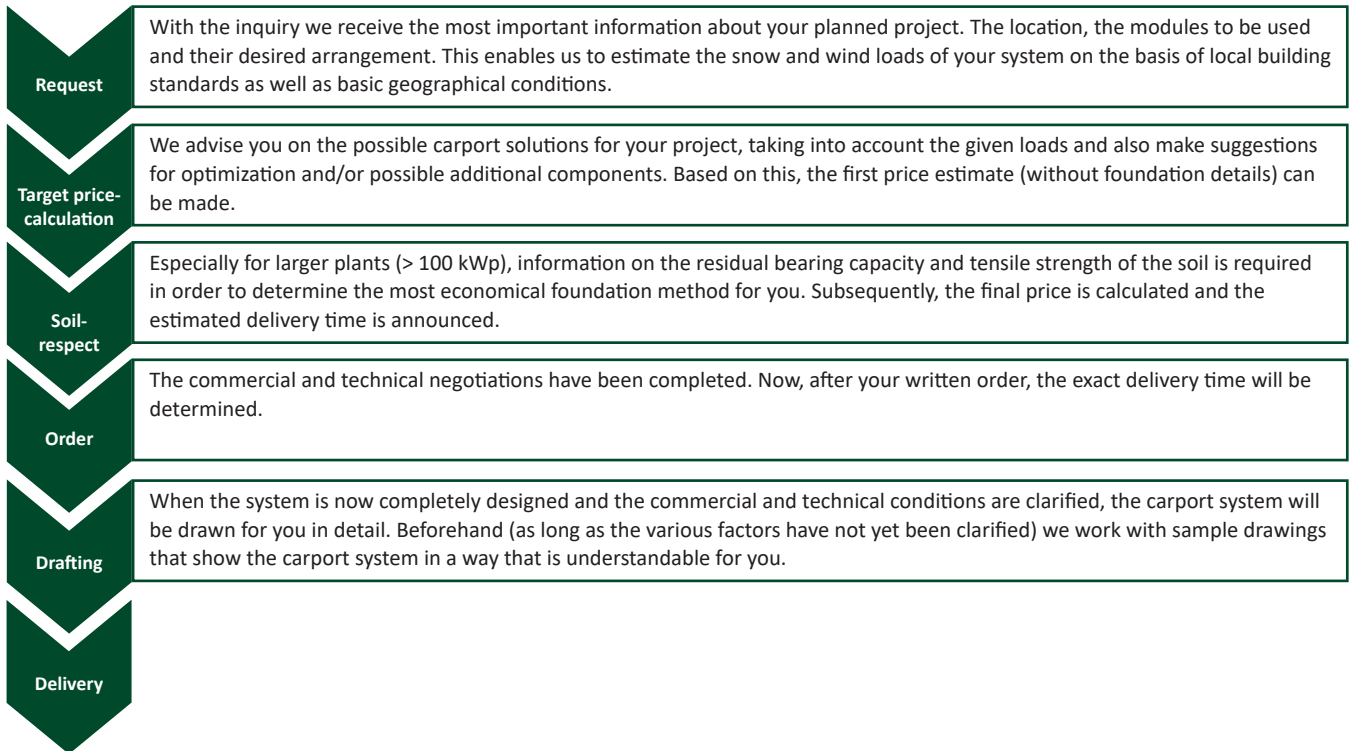


Strip foundation



HOW AND WHY

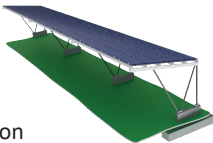
In the following flow chart you will find the individual, chronological steps for ordering the carport system.



HOW MUCH DOES A CARPORT COST?

In order to limit your time and costs and to be able to give you a quick and efficient approximate indication of the expected costs, we have calculated and priced two non-binding sample offers for you below. We have used relatively moderate snow and wind loads as well as a polycrystalline standard module with 300 Wp and 2400Pa pressure tolerance as a basis based on the Eurocode. We have chosen the design based on our experience but also on the most favorable delivery conditions. So you can get a first price feeling for our carports:

C1

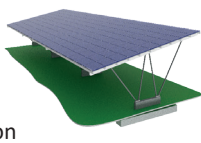


10° inclination
2,5 m clearance height

Without accessories and foundation Target price C1S:
approx. 490 €/kW

With rain cover Price C1R:
approx. 530 €/kW

C2



10° inclination
2,5 m clearance height

Without accessories and foundation Target price C2S:
approx. 520 €/kW

With rain cover Price C2R:
approx. 550 €/kW

C2Y









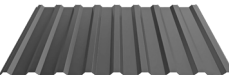


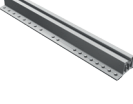

10° inclination
2,5 m clearance height

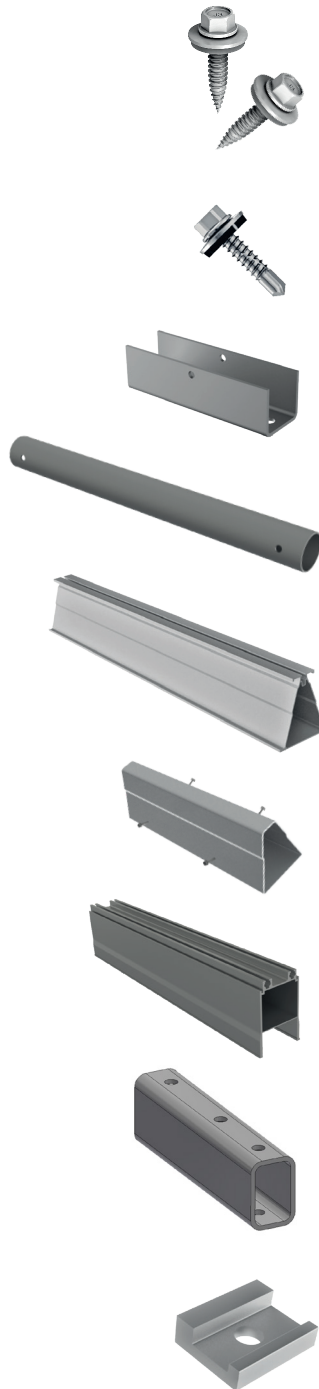
Without accessories and foundation Target price C2YS:
approx. 550 €/kW

With rain cover Price C2YR:
approx. 580 €/kW



Component overview:

Part no.	Article description
 91112-00	End clamp Vario, for module height 30 - 50 mm, TX 40
 96112-00	End clamp Vario, black anodized, for module height 30 - 50 mm, TX 40
 91121-01	Middle clamp Vario with grounding, TX 40
 96141-01	Middle clamp Vario, black anodized with grounding, TX 40
 91151-01	Middle clamp Vario
 96151-01	Middle clamp Vario, black anodized
	Trapezoidal sheet metal for rain system
 11201-01	Trapez I for rain system incl. 2x drilling screw, part no. 93155-25
 13202-01	Trapez II for rain version incl. 2x drilling screw, part no. 93155-25
 11205-03	Trapez III for rain system incl. 4x drilling screws, part no. 93155-25
 93201-00	Potential equalization plate for rain system



Part no.	Article description
93155-25	Drilling screw self-grooving 5.5 x 25 DS 16 mm
93160-25	Drilling screw self-grooving 6.0 x 25 DS 16 mm
93155-26	Drilling screw with drill bit 5.5 x 25 DS 16 mm
42101-01	Foundation shoe
82501-1000	Pipe
81260-1000	Aluminium purlin 60
81261-400	Aluminium purlin connector 60
81302-00	Girder HJS02
81310-400	Girder inner connector
41801-040	Clamping plate



Check list:

Thank you for your interest in our systems. So that we can offer you a precise offer, we kindly ask you to consider the following points as far as possible in detail and conscientiously to elaborate / fill out.

CONTACTS

Firm

Surname, first name

Street

ZIP Code City

Country

Phone

Email

DESIRED CARPORT VERSIONS

C1S one-sided sun protection

C1R one-sided rain protection

C2S double-sided sun protection

C2R double-sided rain protection

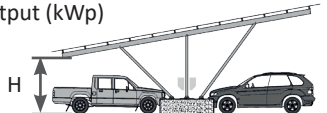
C2BS butterfly, double-sided sun protection

C2BR butterfly, double-sided rain protection

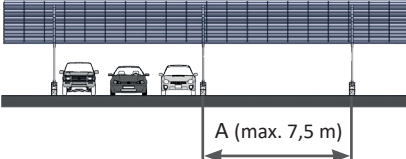
Project name

Pitches (pcs.) Total output (kWp)

clear height H (m)



Axis A (m)



DESIRED MODULE ARRANGEMENT

Vertical

Horizontal

Inclination (We recommend 10 - 15°)

Modules on top of each (pcs.) Modules side by side (pcs.)


MANDATORY INFORMATION BY EMAIL

- Google Earth Pin (position) of the planned location
- Plant layout with contour lines (of the terrain)
- Moduldatenblatt


Without this information an offer is not possible!

PARKMETHODE


diagonally




vertical C1



vertical C2



parallel





Check list:

CONDUCTORS

Are there any pipes on the premises? Please mark with a cross and, if necessary, supply plans with dimensions:

Electricity Water Gas Phone Drainage

There are no lines

INFORMATION ON THE SURFACE

Pavement Concrete Asphalt

SOIL CHARACTERISTICS

The subsoil consists of all or part of it:

Refills Contaminated sites

Are or have measures already been taken for soil improvement (e.g. soil replacement, geogrid/fleece)?

Further information on the site

EXPLOSIVE ORDNANCE AND REMNANTS OF WAR

We assume that there are no unexploded ordnance in the underground. Especially for industrial areas and old airports we recommend an inquiry at the aerial photo database (www.luftbilddatenbank.de) and ask for a written confirmation in case of an order.

THE FOLLOWING POINTS MUST STILL BE OBSERVED WHEN CARRYING OUT THE EXAMINATION:

- At the beginning of the soil investigation, our commissioned test manager is instructed on site by your employee in the property to be investigated on the basis of a site plan. In this way, false investigations on foreign areas or line damage can be avoided.
- If a geological survey of the investigated area has already been carried out or special features of the subsoil are known, these must be communicated to us in advance.
- The results of the subsoil investigation serve to assess the subsoil.
- Changes made to the subsoil after the investigation (e.g. earthworks, embankments, rearrangements, etc.) may require a new investigation, resulting in additional costs to be borne by the client.
- The examination can only be carried out if the checklist has been completed in full and signed and sent to us together with the site plans.
- The General Terms and Conditions of Sale and Delivery of SL Rack GmbH apply in their current version. These can be viewed at any time on the Internet at <https://www.sl-rack.com>

This data sheet only contains information for SL Rack GmbH and its respective customers/interested parties. The content of this document depends on the location of the project and the respective customer requirements.

Place Date Signature

Subject to technical changes and misprints.
Status 11/2021 V15